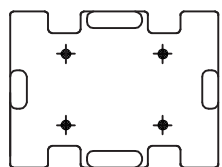
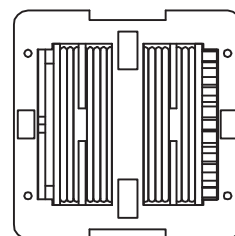
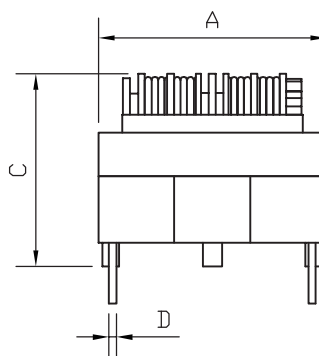
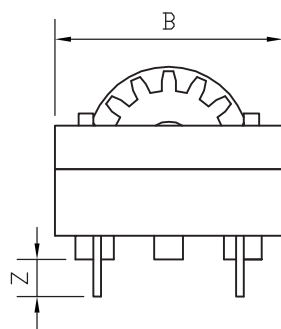
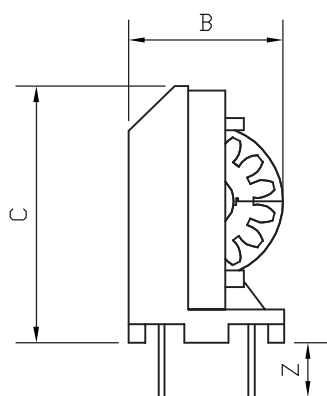
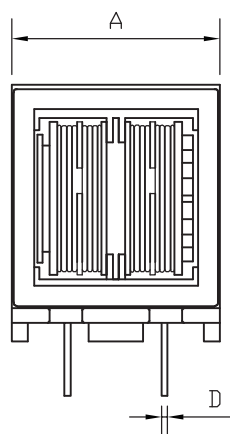
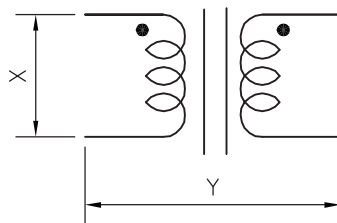


ラインフィルタ ETシリーズ

- 機械巻き、高い生産効率
- 優れたパフォーマンスの一貫性
- 分割ボビンによる広い周波数範囲で高インピーダンス



タイプ1

タイプ2

型番	インダクタンス [mH] (typ)	直流抵抗 mΩ±15%	定格電流 [A] (TA=50°C)	共振周波数 [kHz] (typ)	タイプ	寸法 [mm] (typ)						
						X	Y	Z	A	B	C	D
CM-ET24-10-027-168-V	168.0	2400	0.60	165	1	10.0	13.0	4.0	25.0	17.5	29.5	φ0.8
CM-ET24-10-027-168-H					2	15.0	21.0	4.0	24.5	24.5	20.0	φ0.8
CM-ET24-10-030-123-V	123.0	1650	0.74	170	1	10.0	13.0	4.0	25.0	17.5	29.5	φ0.8
CM-ET24-10-030-123-H					2	15.0	21.0	4.0	24.5	24.5	20.0	φ0.8
CM-ET24-10-035-55M-V	55.0	810	1.00	260	1	10.0	13.0	4.0	25.0	17.5	29.5	φ0.8
CM-ET24-10-035-55M-H					2	15.0	21.0	4.0	24.5	24.5	20.0	φ0.8
CM-ET24-10-040-38M-V	38.0	510	1.31	290	1	10.0	13.0	4.0	25.0	17.5	29.5	φ0.8
CM-ET24-10-040-38M-H					2	15.0	21.0	4.0	24.5	24.5	20.0	φ0.8
CM-ET24-10-045-26M-V	26.0	350	1.66	350	1	10.0	13.0	4.0	25.0	17.5	29.5	φ0.8
CM-ET24-10-045-26M-H					2	15.0	21.0	4.0	24.5	24.5	20.0	φ0.8
CM-ET24-10-050-15M-V	15.0	210	2.04	500	1	10.0	13.0	4.0	25.0	17.5	29.5	φ0.8
CM-ET24-10-050-15M-H					2	15.0	21.0	4.0	24.5	24.5	20.0	φ0.8
CM-ET24-10-055-9M5-V	9.5	140	2.47	620	1	10.0	13.0	4.0	25.0	17.5	29.5	φ0.8
CM-ET24-10-055-9M5-H					2	15.0	21.0	4.0	24.5	24.5	20.0	φ0.8

ラインフィルタ ETシリーズ

型番	インダクタンス [mH] (typ)	直流抵抗 mΩ±15%	定格電流 [A] (TA=50°C)	共振周波数 [kHz] (typ)	タイプ	寸法 [mm] (typ)						
						X	Y	Z	A	B	C	D
CM-ET24-10-060-6M2-V	6.2	101	2.94	750	1	10.0	13.0	4.0	25.0	17.5	29.5	φ0.8
CM-ET24-10-060-6M2-H					2	15.0	21.0	4.0	24.5	24.5	20.0	φ0.8
CM-ET24-10-065-5M5-V	5.5	74	3.45	850	1	10.0	13.0	4.0	25.0	17.5	29.5	φ0.8
CM-ET24-10-065-5M5-H					2	15.0	21.0	4.0	24.5	24.5	20.0	φ0.8
CM-ET24-10-070-3M9-V	3.9	54	4.00	1000	1	10.0	13.0	4.0	25.0	17.5	29.5	φ0.8
CM-ET24-10-070-3M9-H					2	15.0	21.0	4.0	24.5	24.5	20.0	φ0.8
CM-ET28-10-035-175-V	175.0	1500	1.00	120	1	10.0	13.0	4.0	29.5	21.5	34.5	φ0.8
CM-ET28-10-035-175-H					2	20.0	24.0	4.0	28.5	28.5	23.5	φ0.8
CM-ET28-10-037-146-V	146.0	1200	1.11	130	1	10.0	13.0	4.0	29.5	21.5	34.5	φ0.8
CM-ET28-10-037-146-H					2	20.0	24.0	4.0	28.5	28.5	23.5	φ0.8
CM-ET28-10-040-92M-V	92.0	860	1.31	160	1	10.0	13.0	4.0	29.5	21.5	34.5	φ0.8
CM-ET28-10-040-92M-H					2	20.0	24.0	4.0	28.5	28.5	23.5	φ0.8
CM-ET28-10-045-66M-V	66.0	580	1.66	180	1	10.0	13.0	4.0	29.5	21.5	34.5	φ0.8
CM-ET28-10-045-66M-H					2	20.0	24.0	4.0	28.5	28.5	23.5	φ0.8
CM-ET28-10-050-42M-V	42.0	370	2.04	230	1	10.0	13.0	4.0	29.5	21.5	34.5	φ0.8
CM-ET28-10-050-42M-H					2	20.0	24.0	4.0	28.5	28.5	23.5	φ0.8
CM-ET28-10-055-25M-V	25.0	240	2.47	290	1	10.0	13.0	4.0	29.5	21.5	34.5	φ0.8
CM-ET28-10-055-25M-H					2	20.0	24.0	4.0	28.5	28.5	23.5	φ0.8
CM-ET28-10-060-17M-V	17.0	165	2.94	380	1	10.0	13.0	4.0	29.5	21.5	34.5	φ0.8
CM-ET28-10-060-17M-H					2	20.0	24.0	4.0	28.5	28.5	23.5	φ0.8
CM-ET28-10-065-13M-V	13.0	125	3.45	450	1	10.0	13.0	4.0	29.5	21.5	34.5	φ0.8
CM-ET28-10-065-13M-H					2	20.0	24.0	4.0	28.5	28.5	23.5	φ0.8
CM-ET28-10-070-9M5-V	9.5	88	4.0	600	1	10.0	13.0	4.0	29.5	21.5	34.5	φ0.8
CM-ET28-10-070-9M5-H					2	20.0	24.0	4.0	28.5	28.5	23.5	φ0.8

- ①インダクタンス測定条件:10kHz, 0.1V
- ②直流抵抗は+25°Cでの値
- ③定格電流条件下で製品の温度上昇は45°C以下
- ④定格電圧および周波数:250V, 50/60Hz
- ⑤耐電圧条件:2000V, 50/60Hz, 2sec
- ⑥絶縁抵抗条件:500Vdc, 100MΩ以上

Endela

ラインフィルタ ETシリーズ

インピーダンス特性曲線 (型番CM-ET~)

